

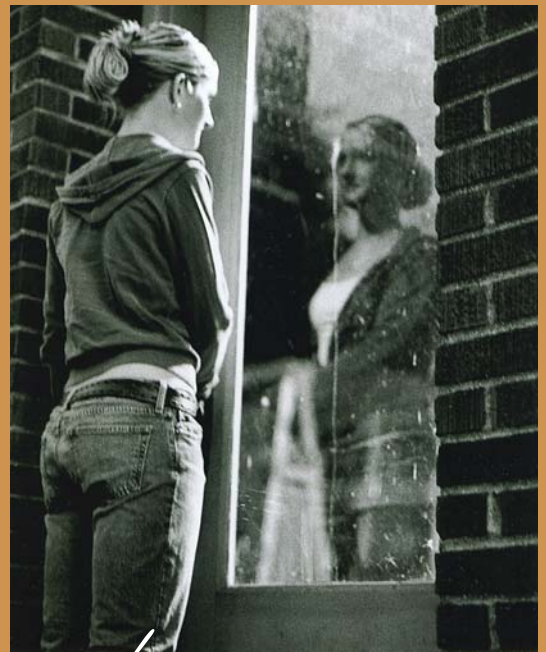
2005 PHOTO CONTEST *Winners*



*1st* *Youngsters Greeting*  
Lowell Ross—Afton, Minnesota



*2nd* *Fountains of Joy*  
Kim Salewski—Suwanee, Georgia



*3rd* *Reflection*  
Louis Scherer—Monroe, Wisconsin

Don't miss the  
*2006*  
*Contest Rules*  
on page 14...



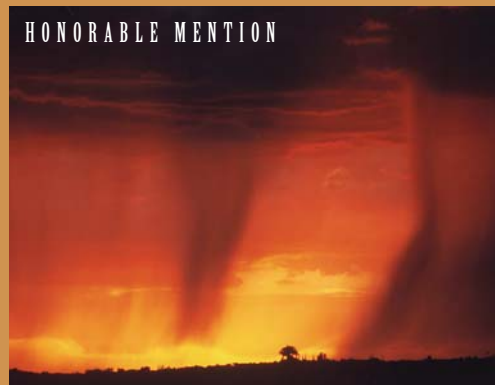
*1st* *Early Morning Fog*  
Jodi Anderson—Janesville, Wisconsin



*2nd* *An Artist at Work*  
Philip Hazelwood—Roseville, California



*3rd* *Bryce Canyon, Utah*  
Vernon Steger—Jackson, Missouri



*HONORABLE MENTION*  
*Desert Shower*  
Thomas Kuehn—Tucson, Arizona



*1st* **Mail Call**  
Kip Kriigel—Oxford, Michigan



*2nd* **Manty Sees Yellow**  
Mary Merendino—Enola, Pennsylvania



*3rd* **Baby Loggerhead**  
David Johnston—Madison, Wisconsin

## Enter NMB's 2006 AMATEUR PHOTO CONTEST!

Keep your camera handy for photo opportunities at family get-togethers, on vacation, or in your neighborhood. We're kicking off NMB's 2006 Amateur Photo Contest for members of all ages. Enter and you could win a cash prize!

**SUBJECT CATEGORIES:** People, Animals, or Scenery

**PRIZES:** The following cash prizes will be awarded for each category:

First Place – \$150 • Second Place – \$100 • Third Place – \$75

Honorable mention \$25 prizes may also be awarded in each category.

**RULES:** It is important that you follow the contest rules listed below or your entry could be disqualified.

1. You must have an NMB life insurance policy or annuity contract.
2. Members of all ages may enter.
3. Only one entry per member accepted.

4. The subject of your photo must be of People, Animals, or Scenery.
5. Your entry must have been photographed by you in the past year.
6. 8" x 10" black & white or color prints are preferred. If your entry is a digital photo, please use high resolution and high quality settings when taking the photo.
7. Framed or matted photos, and photos that won awards previously, will not be accepted. No professional photos accepted.
8. Your **name, address, policy number, and photo title** must appear legibly on a label attached to the back of the photo.
9. Entries must be postmarked on or before **June 30, 2006**.
10. All entries become the property of National Mutual Benefit and will not be returned.
11. **Mail entry to:** Fraternal Services, National Mutual Benefit, P.O. Box 1527, Madison, WI 53701-1527.

